

CT Development in Glasgow

Derek Halden

DHC

26 Palmerston Place, Edinburgh EH12 5AL

derek.halden@dhc1.co.uk

www.dhc1.co.uk



What is CT?
Where does it operate?
Why is it needed?
Where is there scope for more and better CT?



What is CT?

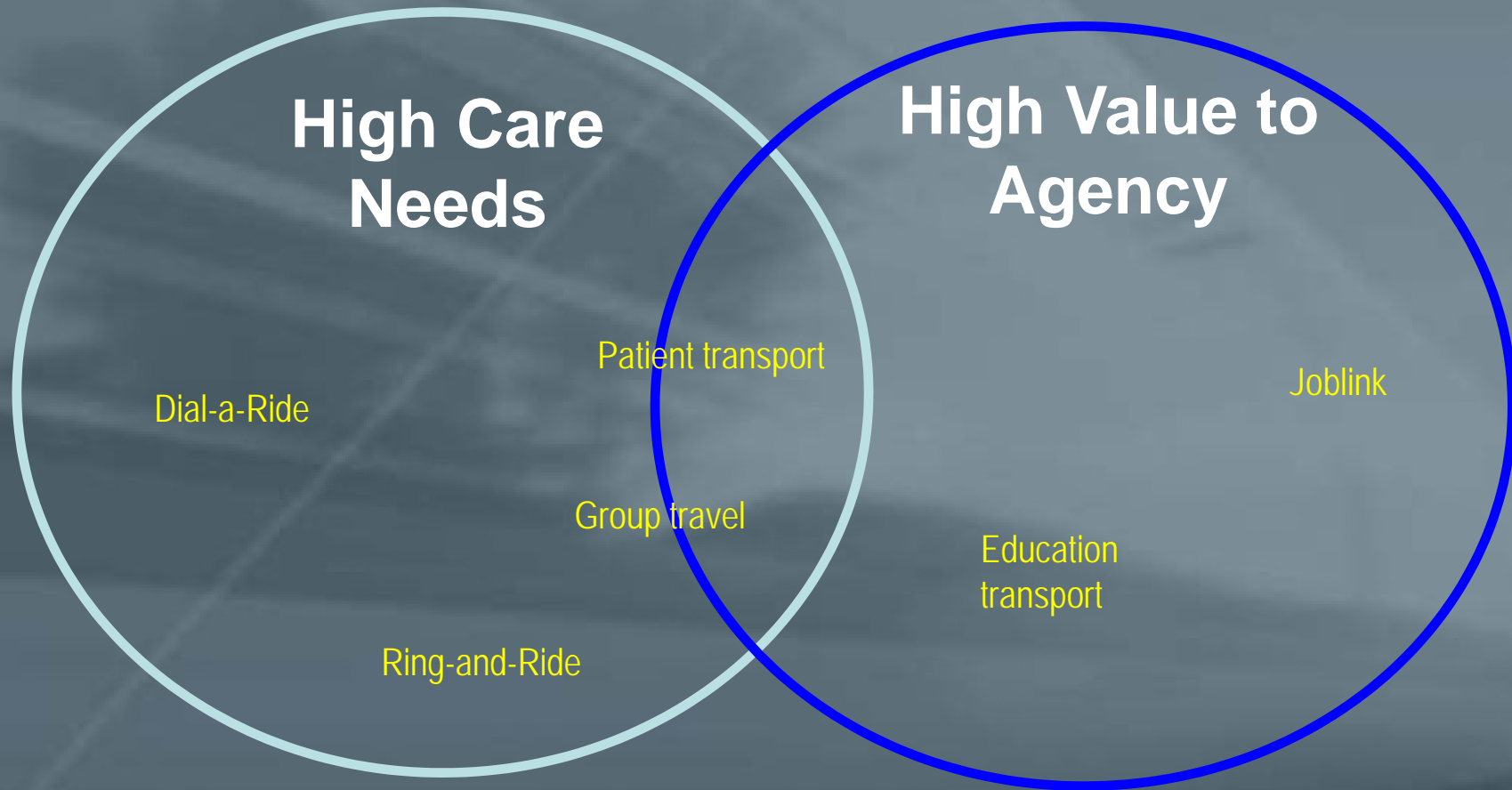
- Transport provided on a **non-commercial** basis and operated by an independent, **non-statutory** organisation and operated without complex **qualification criteria** and with some input from **volunteers**, either in management, fund raising, administration or operation.

Roles of CT Operators

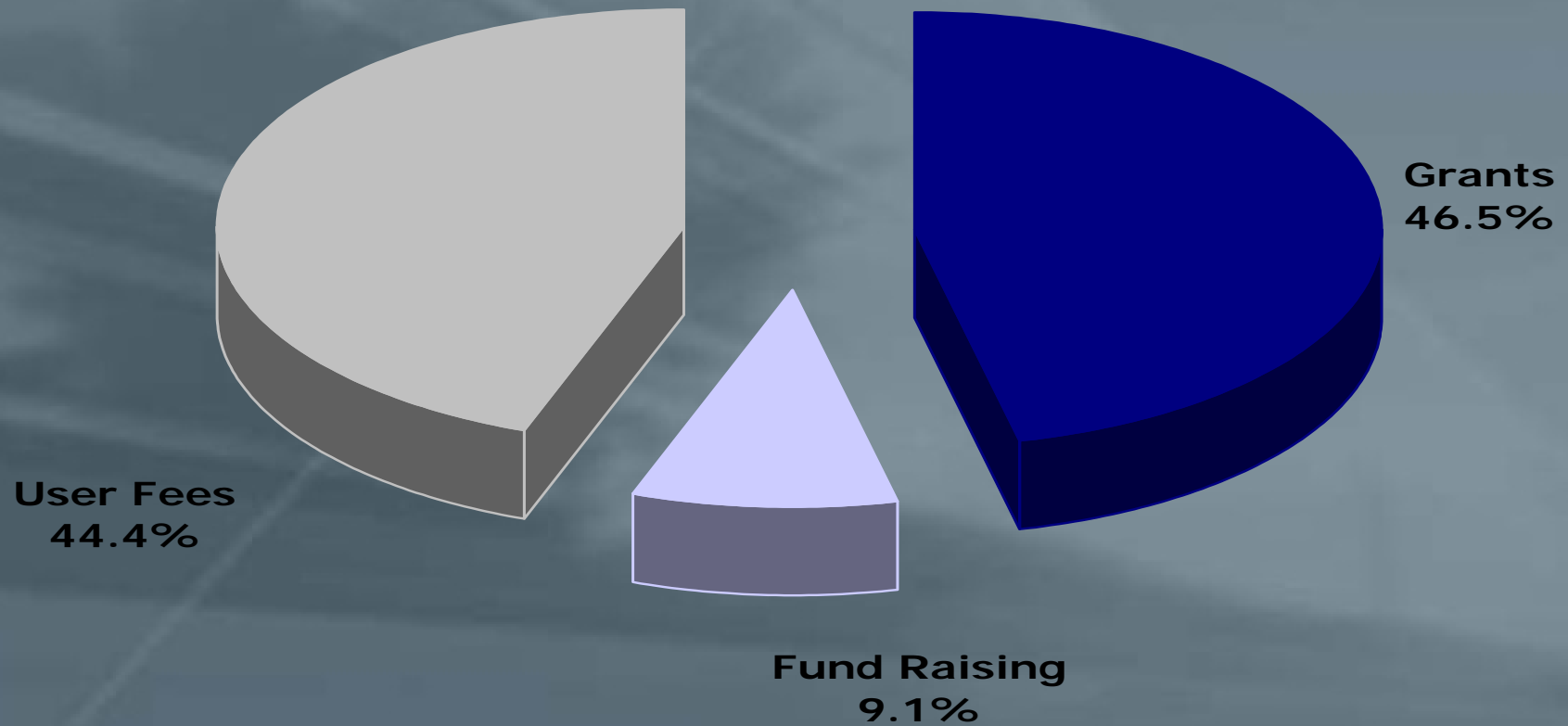
- Much more than CT
 - Fundraising
 - Contracts
 - School transport
 - Evening classes, SEN
 - Public transport contracts
 - Patient transport contracts
 - Voluntary car scheme
 - Wheels to work
 - Group travel
 - Services for tourists



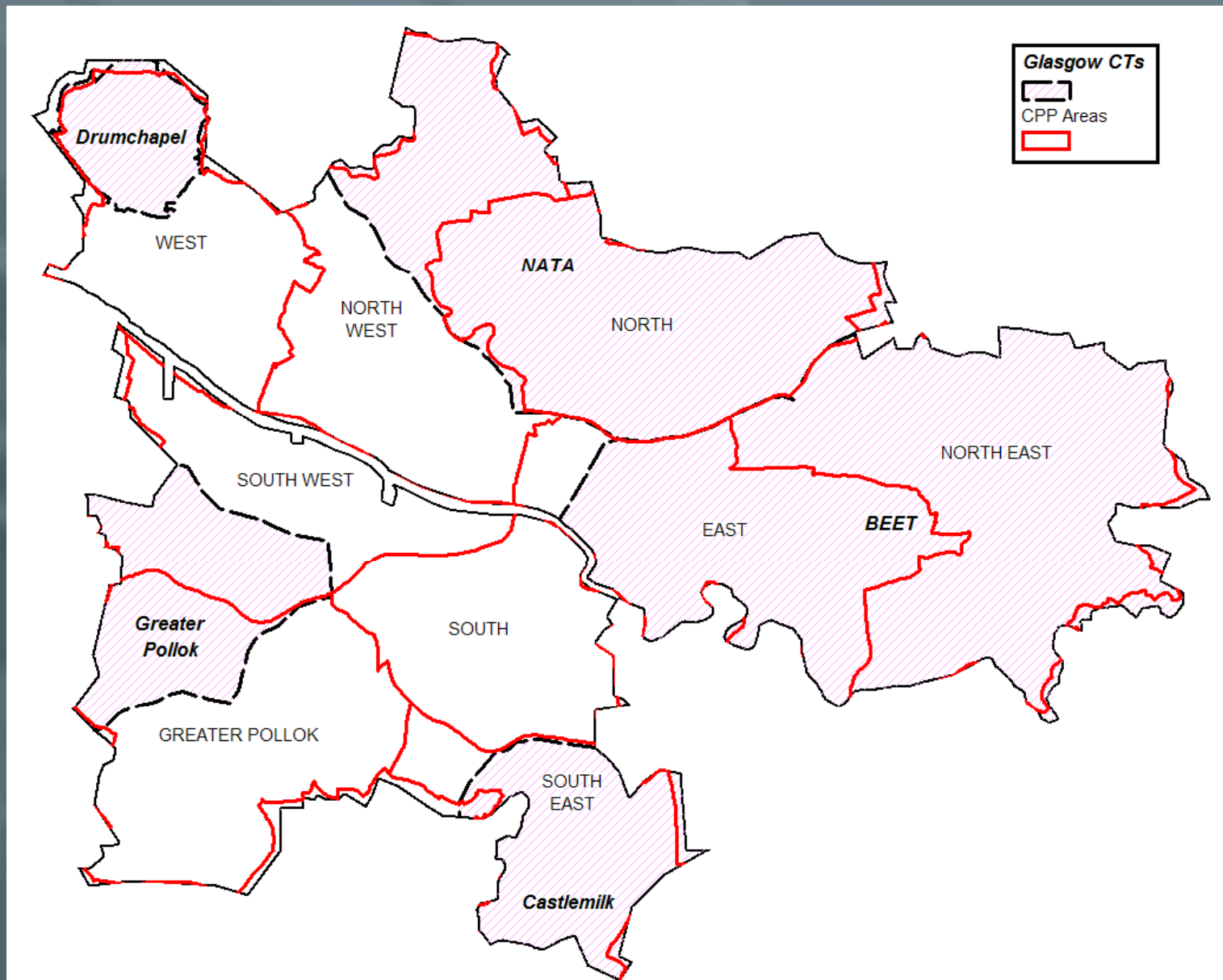
Two Main CT Markets



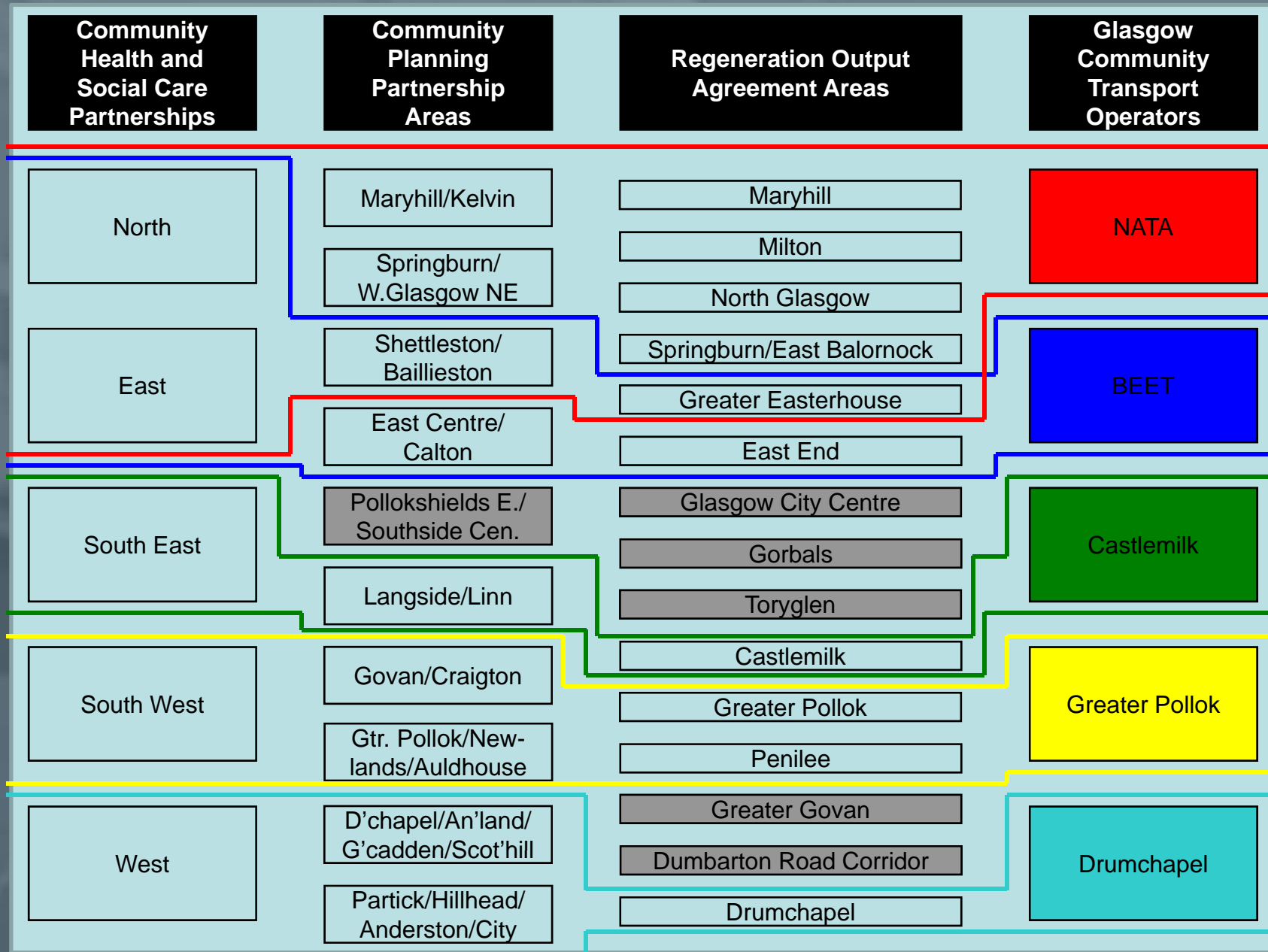
Who Pays for CT?



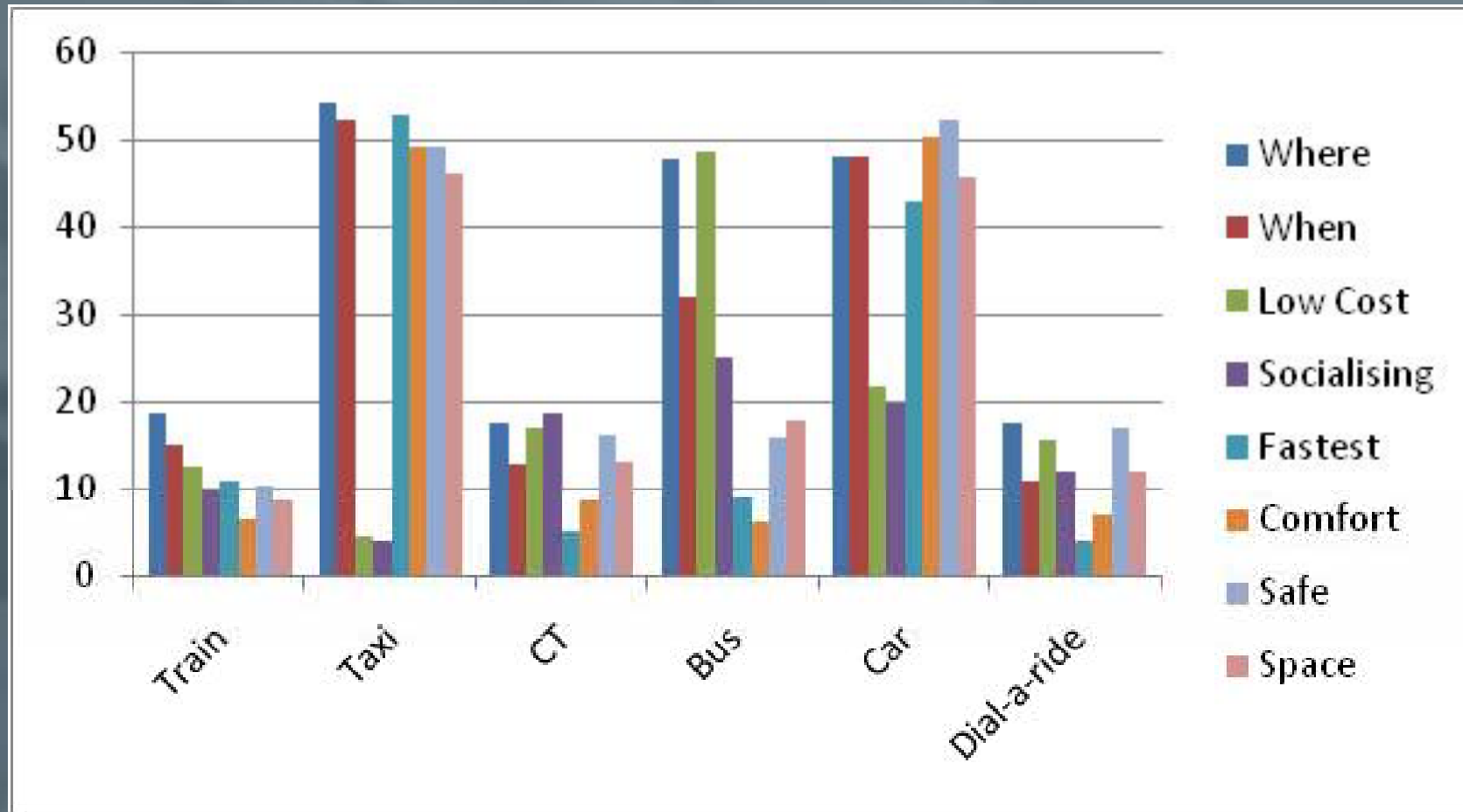
The Operators



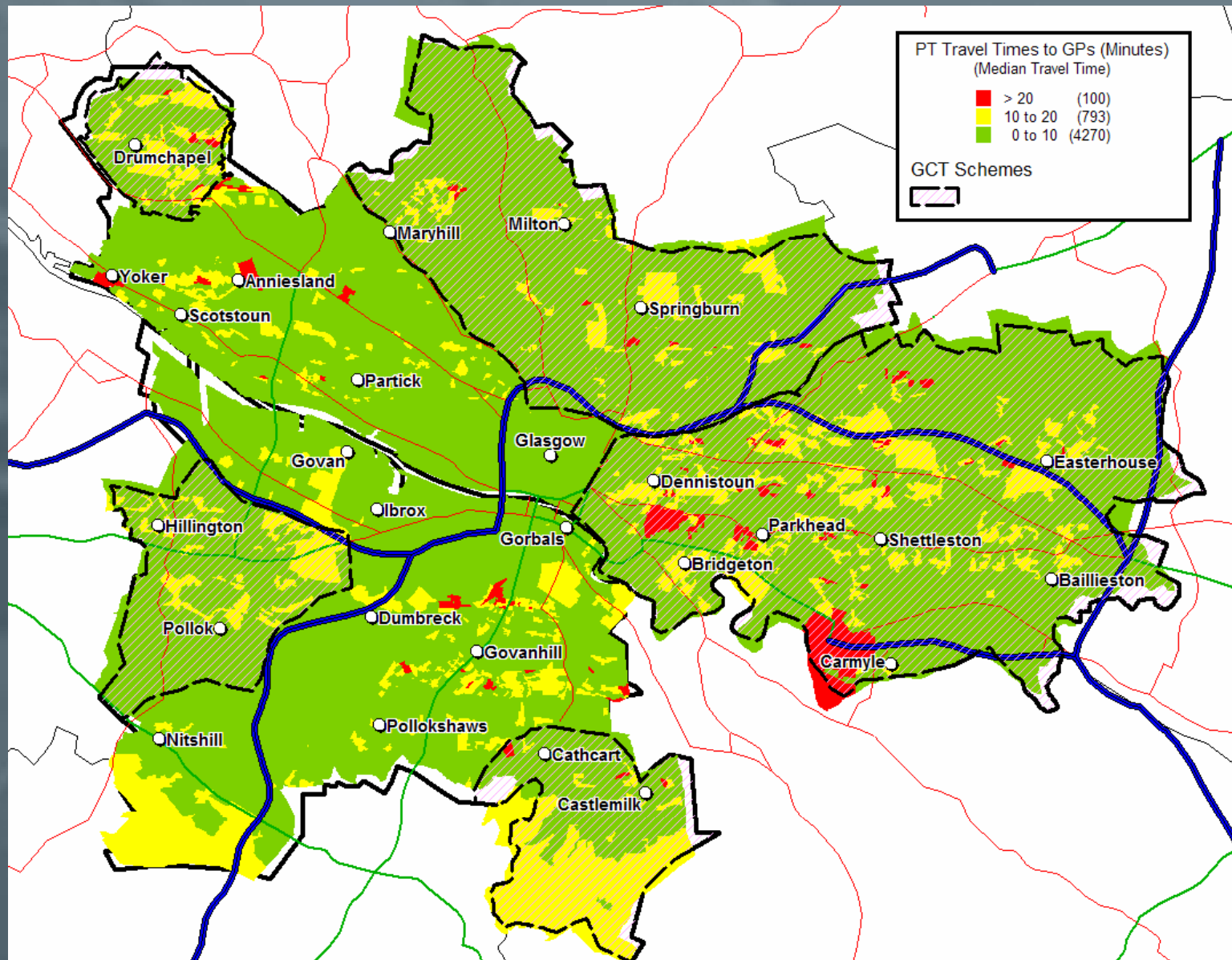
Administration and Gaps



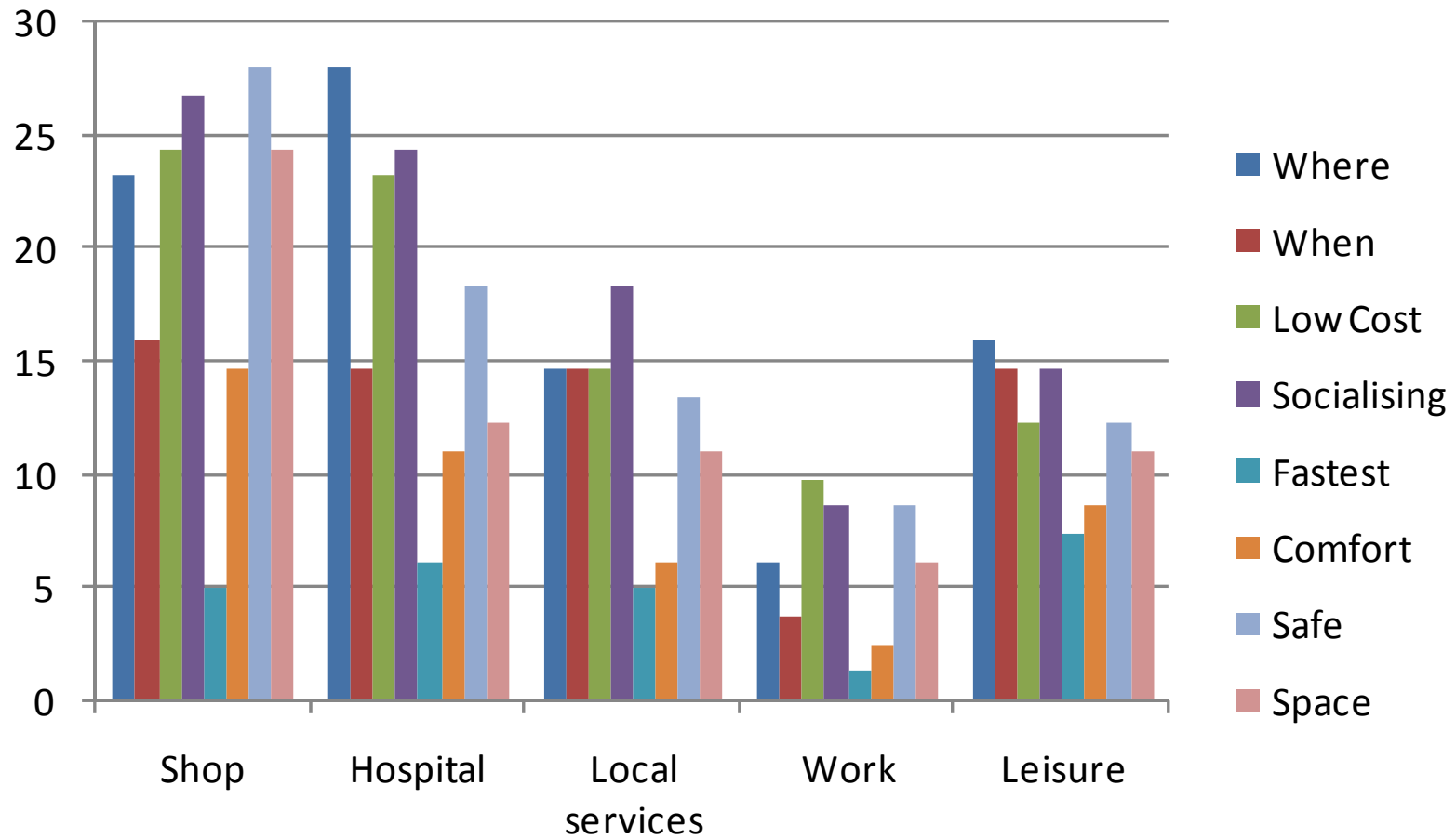
Views of Different Modes



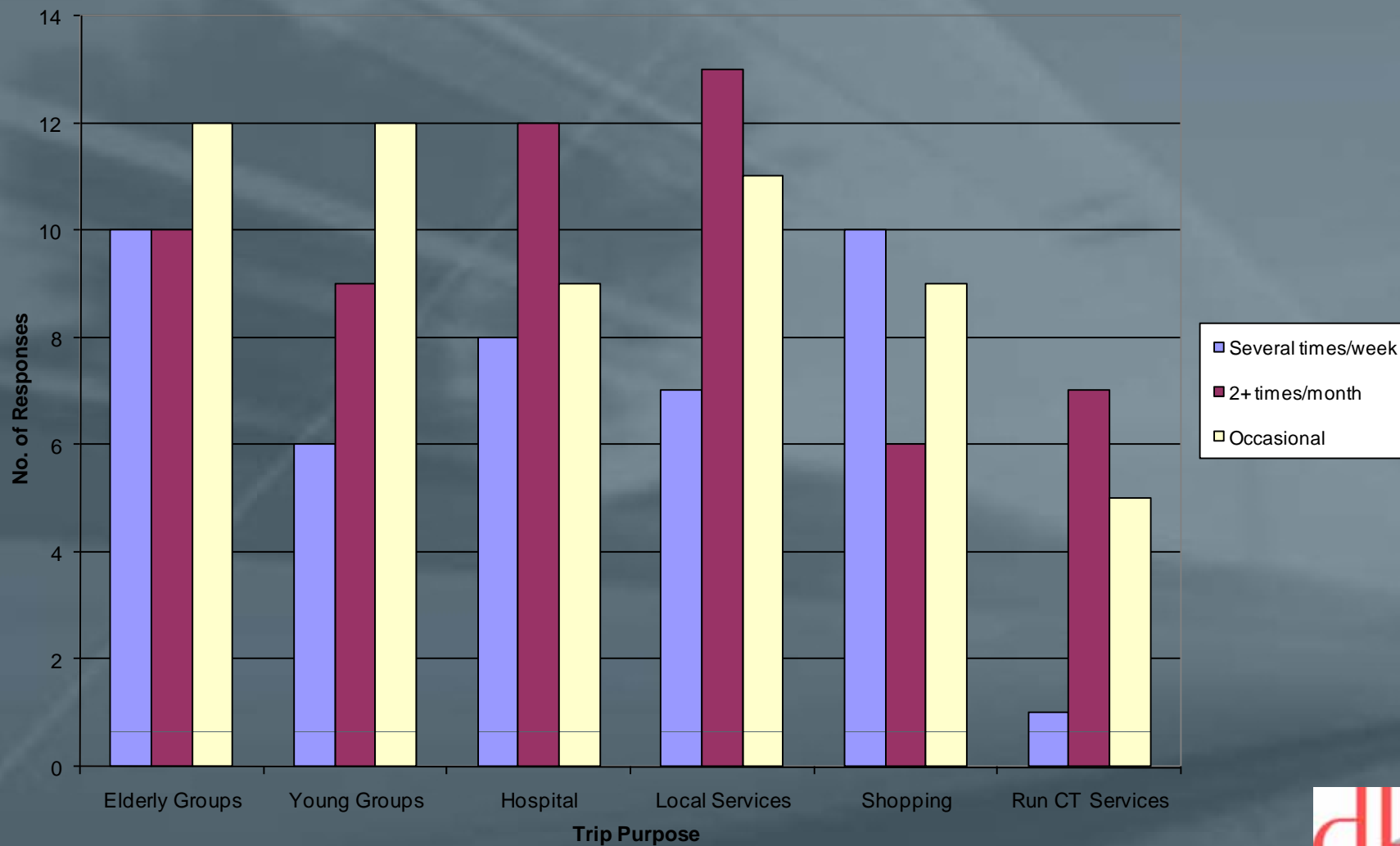
Local Health



Why People Use CT



How Often People Use CT

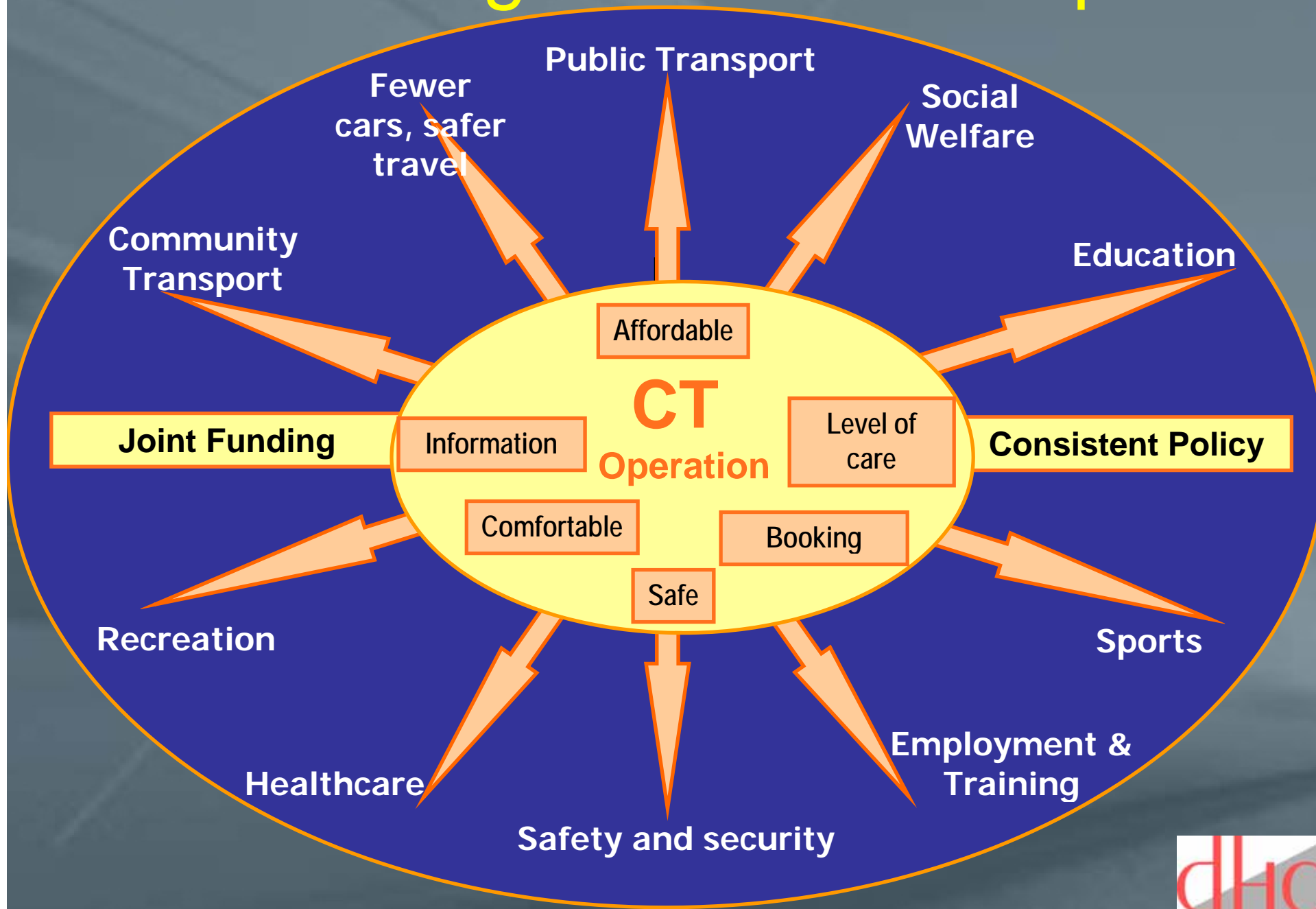


Better Future CT

- Strengths
 - Enhanced network coverage for shopping and hospital trips
 - Opportunities to socialise on the journey
 - Low cost of travel by CT
- Weaknesses
 - Gaps in coverage
 - Promotion and information
 - Booking and integration
 - Concessionary passes



Funding and Partnership



The Way Forward

- Complementing public transport
- Tackling social exclusion
- Supporting healthcare policies
- Providing employability support
- Improving community capacity
- Tackling crime and improving safety
- Improving access to learning
- Leisure services and youth work

Recommendations

- Expansion, capacity building and new operators
- Realise potential for funding
- Marketing and information covering all modes